



Base Vehicle Specification

2010 Toyota Land Cruiser G, Diesel V8,

Type	: Left Hand Drive, 4-door SUV
Engine, Fuel Type	: 4.5L, Turbo Diesel, 8-cyl 32-valve, 217hp@3600rpm Diesel
Fuel Tank	: 96L
Transmission	: <u>Manual, 5 speed or Auto</u>
Drive Train	: full time 4WD
Brakes	: Power-assisted 4-piston front/2-piston rear ventilated disc brakes with hydraulic booster
Tyres	: 245/75R17
Suspension	: Independent double-wishbone front suspension with coil springs and stabilizer bar; 4-link rear suspension with coil springs, stabilizer bar and semi-floating axle
Seats	: 2+3+3, Fabric
Wheelbase	: 2850 mm
Dimensions	: length - 4950mm, width - 1970mm, height – 1890mm
Colour	: White, Black , Silver
Standard Features	: Air Conditioning, remote control entry, AM/FM radio/cassette or CD

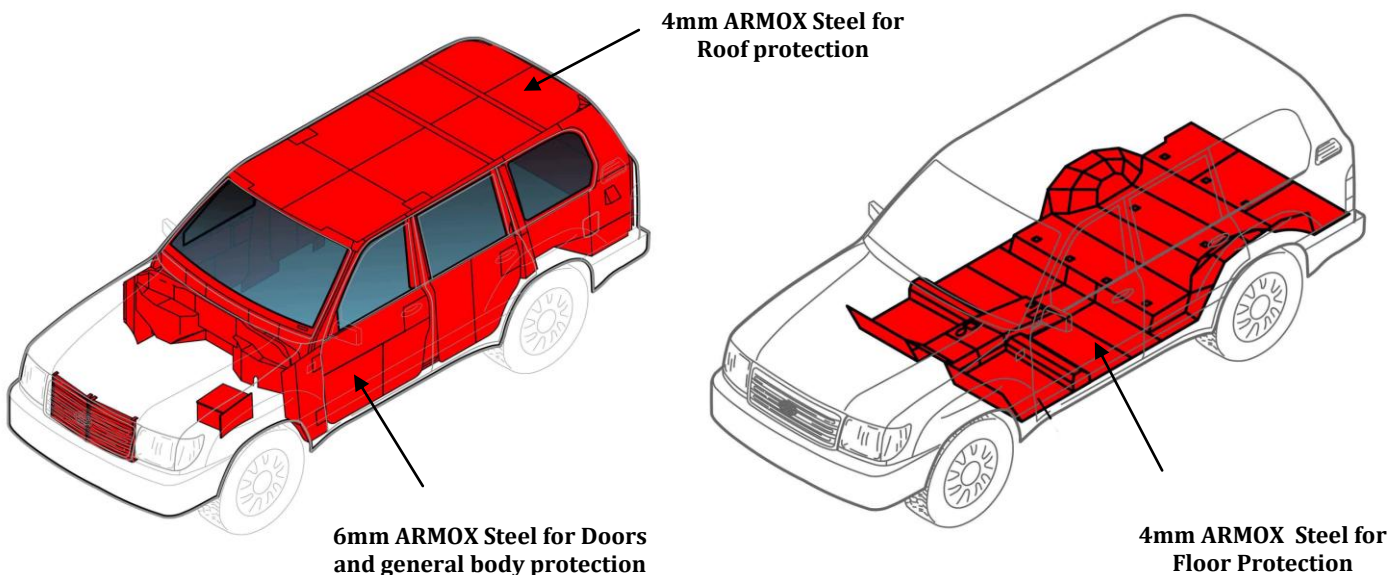
TECHNICAL DESCRIPTION OF CAR BODY PROTECTION

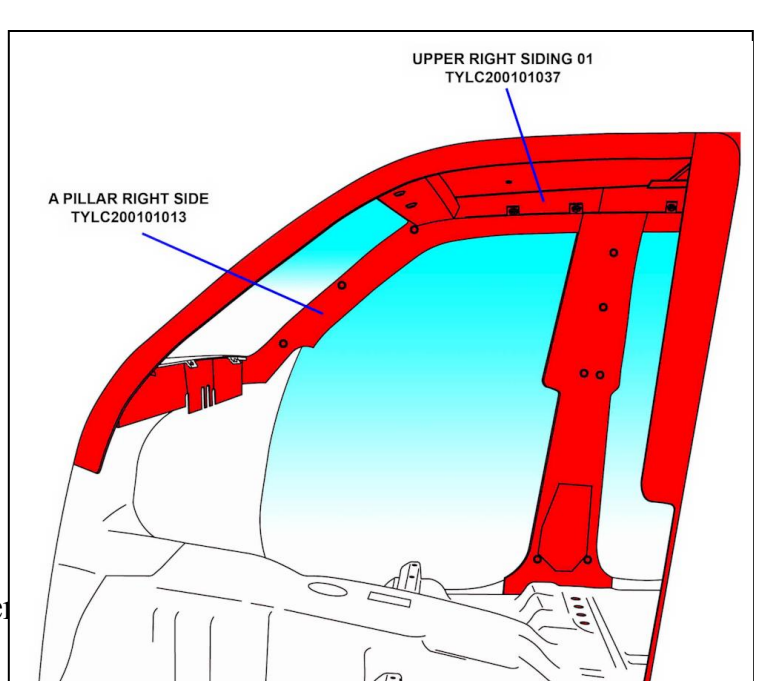
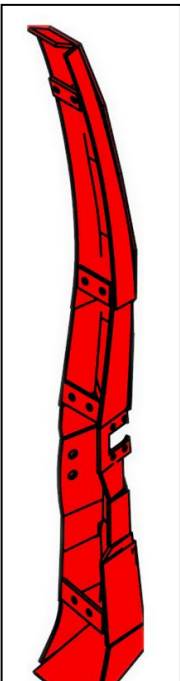
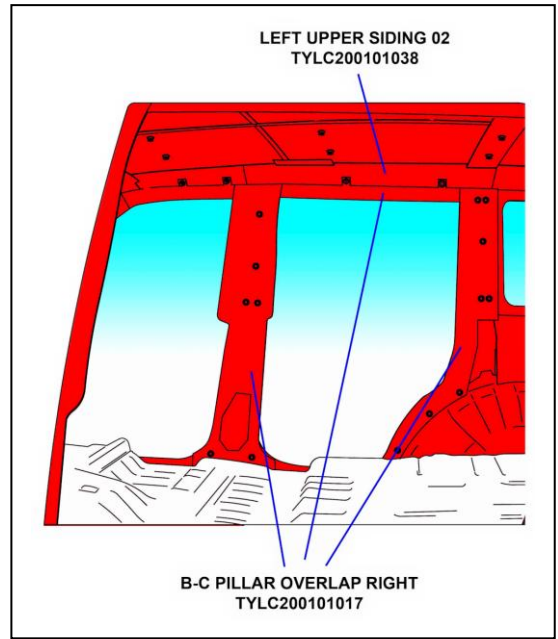
The vehicles will be armoured to meet the specification EN 1522/1523 level FB6 (7,62 x 51 Nato Ball).

AREAS PROTECTED ARE 360° AROUND THE VEHICLE, SIDES, WINDOWS AND ROOF

(Standard for this delivery)

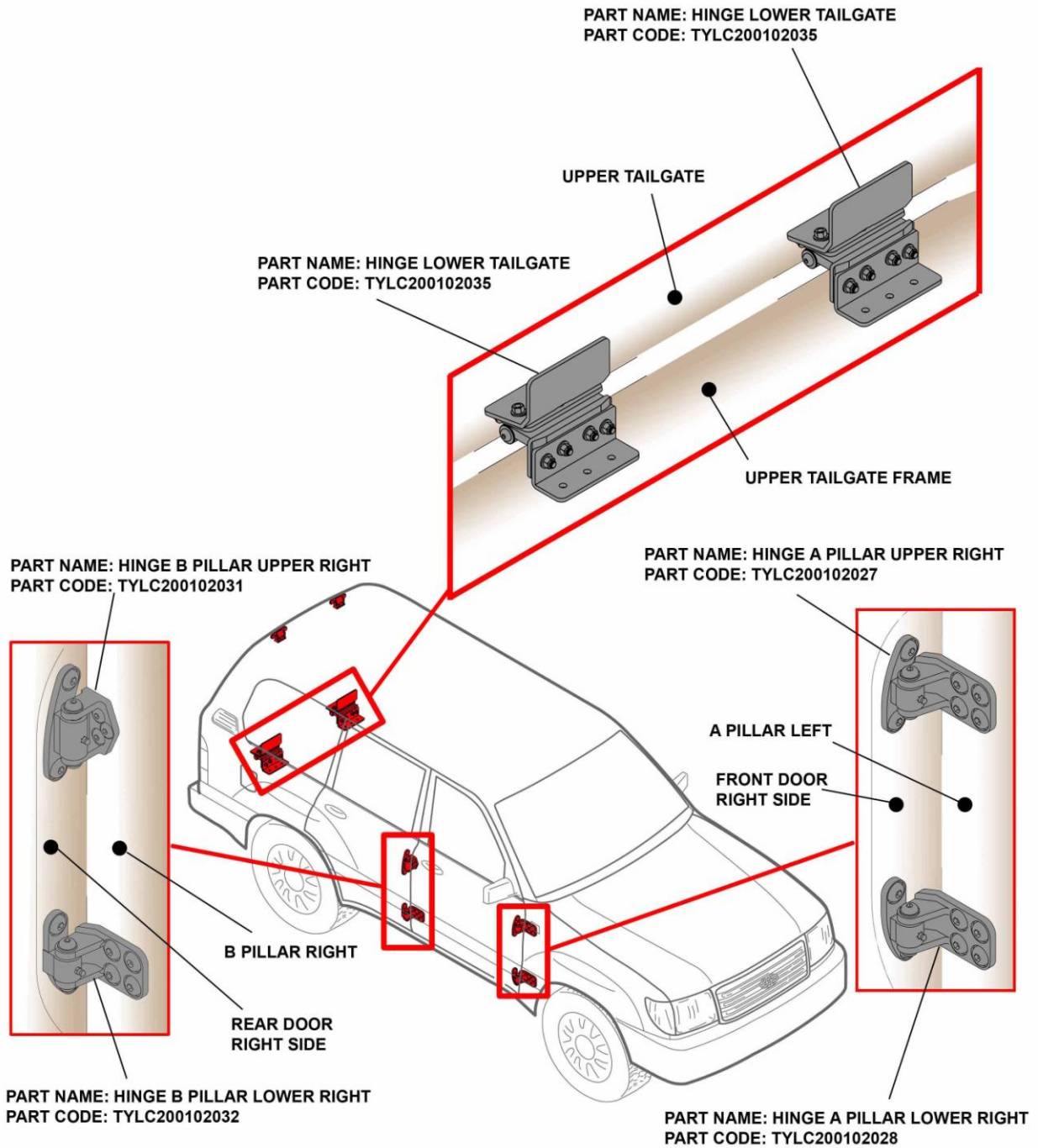
The car body is protected with 6mm BR500 ballistic steel, cut and shaped to fit the cabin interior. This type of steel is also used for overlap and door edges. The car cabin are protected from floor inclusive the roof section. Floor section 4mm – Roof section 4mm, door and body areas 6mm and 2 fuel tanks protected with 4mm. A-B-C pillars also reinforced with 6mm ballistic steel. – see pictures below.

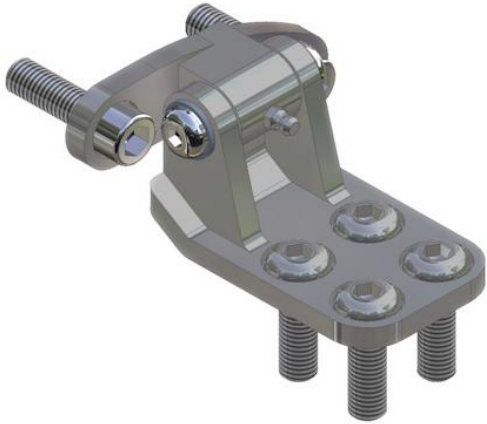




DOOR HINGES (Standard for this delivery)

The original door hinges are upgraded with specially designed reinforced hinges that handles the added weight of the armoured doors (GX series with cargo doors and cargo door hinges).





Hinge is located at the *Left Front door pillar*.
Adjust the Pillar bracket upwards, downwards or sideways only.

Adjust the Door Blade bracket upwards, downwards or inwards, outwards only.

Fastened with:

4 Pcs Hex Socket Button Head Screw

M12 X 1.75 X 40mm Tool: 8mm Allen key

2 Pcs Allen Cap Screw

M12 X 1.75 X 40mm

Tool: 10mm Allen key



Hinge is located at the *Right Rear door pillar*.

Adjust the Pillar bracket upwards, downwards or sideways only.

Adjust the Door Blade bracket upwards, downwards or inwards, outwards only.

Fastened with:

3 Pcs Hex Socket Button Head

Screw M10 X 1.5 X 40mm

Tool: 6mm Allen key

2 Pcs Allen Cap Screw

M12 X 1.75 X 40mm

Tool: 10mm Allen key



Hinge is located at the *Right Rear door pillar*.

Adjust the Pillar bracket upwards, downwards or sideways only.

Adjust the Door Blade bracket upwards, downwards or inwards, outwards only.

Fastened with:

4 Pcs Hex Socket Button Head

Screw M12 X 1.75 X 40mm

Tool: 8mm Allen key

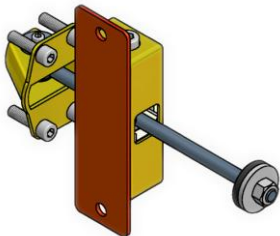
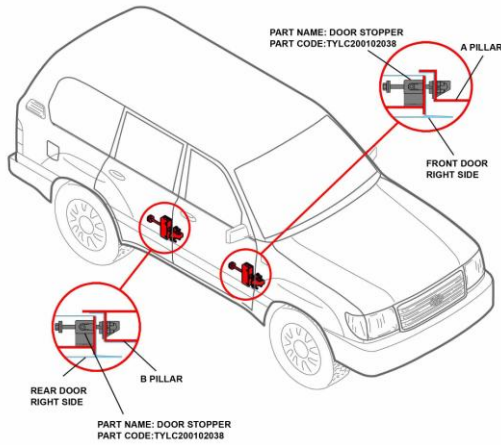
2 Pcs Allen Cap Screw

M12 X 1.75 X 40mm

Tool: 10mm Allen key

DOOR STOPPERS *(Standard for this delivery)*

The original door stoppers are also upgraded with specially designed door stoppers that can handle the added weight of the armoured doors.

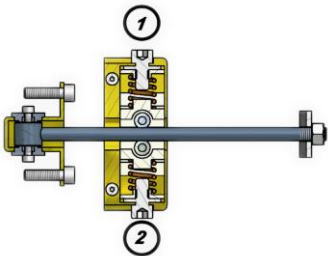


DOOR STOPPER PERSPECTIVE VIEW

Door assembly

Fastened with:

Stitch welding to the 3mm mild steel plate bracket and the bracket is then bolted on to the inside armour of the doors by 2 pcs M10X1.25mmX30mm Hex head bolts.



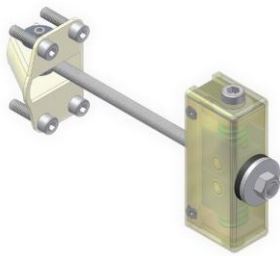
Pillar assembly

Fastened with:

4 pcs M8X1.25mmX30mm
Hex head bolts to the pillars

DOOR STOPPER CROSS SECTION

To adjust the tension in the rollers for the door stopper, use 8mm allen key on position 1 and 2. turn clockwise to tighten the tension and counter clockwise to relieve the tension in the rollers.



NOTE: ALL DOOR STOPPERS ARE THE

WINDOWS – AGP OEM glasses *(Standard for this delivery)*

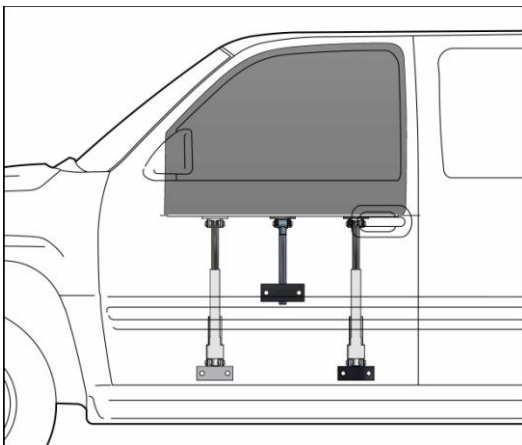
All windows are made from bullet-proofed glasses designed to meet the same protection level as the non-transparent modules. Thickness 39mm. The glasses are fitted with an inner, anti-spall liner **SF** to avoid any release of dangerous glass fragments into the cabin, if hit. The glasses will also have black bands and dark tinting as original glasses. All glasses have identical size and shape (OEM) as the original glasses. Reinforced Window frames in steel, on all windows, to support the window glass from mine blast attack. Glasses produced and supplied by AGP.

COLORS – Deep Tinted or as requested.



WINDOW HOIST *(standard for this delivery)*

Driver's window hoist is operated by the drivers' door panel switch.
Driver's window can be opened approx. 110mm only.



FUSE BOX – MOTOR MANAGEMENT PROTECTION (*standard for this delivery*)

The fuse box and the motor management will be protected with the same level of armour as the rest of the standard car protection – 6mm. Motor management protection covers all outside installation on firewall in full motor room with. Fuse box with air slits.



RADIATOR PROTECTION (*Standard for this delivery*)

The radiator will be protected with the same level of armour as the rest of the car.



BATTERY UPGRADE – 2 BATTERIES *(standard for this delivery)*

OPTIMA® Yellow top **SEALED, VIBRATION RESISTANT, AND LEAK PROOF, EVEN WHEN BROKEN**

In an OPTIMA battery, the lead plates and separator are wound and tightly compressed into a cell tube so they can't move, shed, or break, even in severe shock and vibration applications. In independent SAE tests, the OPTIMA kept working after being subjected to vibrations up to 5G for 12 hours. As in all AGM TECHNOLOGY BATTERIES, there is no "free acid" that can leak out or spill and the OPTIMA can be operated effectively in any position -- even upside down -- without any risk of leaking and because it is sealed, no corrosion can form on the posts, connectors, or cables. **Connection between 2 batteries by relay – batteries connected by motor running. By stop batteries are divided, and each single battery can start motor.**

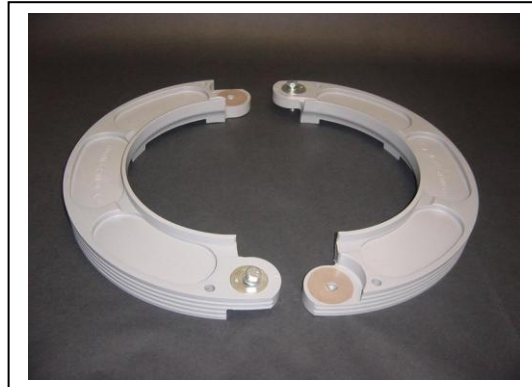
At DC Battery, we have been shown tests in which the a bullet is fired into an Optima leaving a huge hole in the center. Even with the battery's interior exposed, there was no leakage and when placed into a vehicle, it performed perfectly.

The OPTIMA is a sealed, maintenance-free [AGM](#) (Absorbed Glass Mat) battery which exceeds the cranking performance of all other batteries in its size category.



TIRES *(Standard for this delivery)*

RUN-FLAT TIRES inserts in five (5) wheels, advanced material compounds, Lightweight, polyester elastomer materials provide maximum protection from breakage following a ballistic attack. The proprietary material compound is strong enough to support the load of fully armoured Toyota Landcruiser which will make driving possible for 50 km at velocity of 50km/h, after tires are damaged by gun fire or other reasons.



SUSPENSION UPGRADE *(Standard for this delivery)*

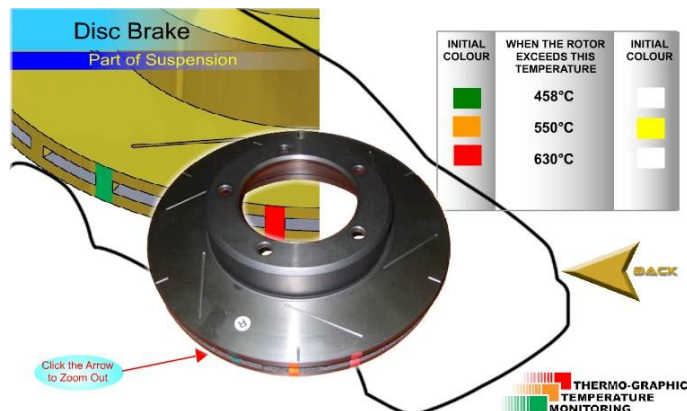
Due to the extra weight load on the vehicle, the suspension must be upgraded. The coil-springs, shock absorbers, stabilizer bars and torsion bar (not GX 105 series), will be changed. This will ensure the vehicle to be operated as a non-armoured one. By request, extra upgrade to 5 tons total weight for bad road conditions.



BRAKE UPGRADE *(Standard for this delivery)*

The brake rotor is marked with three (3) heat sensitive markings (refer to the code chart on the top left side of this page)

These markings allow you to gauge the temperature the disc rotors have achieved and help indicate the efficient and recommended working temperatures of the disc rotors.

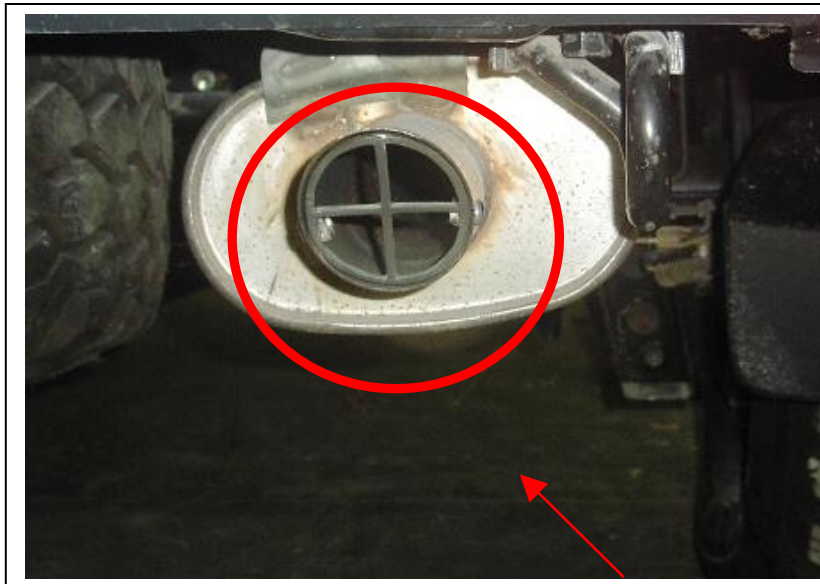


REINFORCED RAM BUMPER *(standard for this delivery)*

Installed behind the original bumper is a reinforced steel pipe bracket. It is attached to the bumper support and the under chassis. This reinforcement is designed for the purpose of ramming any vehicle in front of you, without damaging the engine, in order to clear a path for exiting away from a dangerous situation.



TAILPIPE PROTECTION *(standard for this delivery)*



TAILPIPE PROTECTION

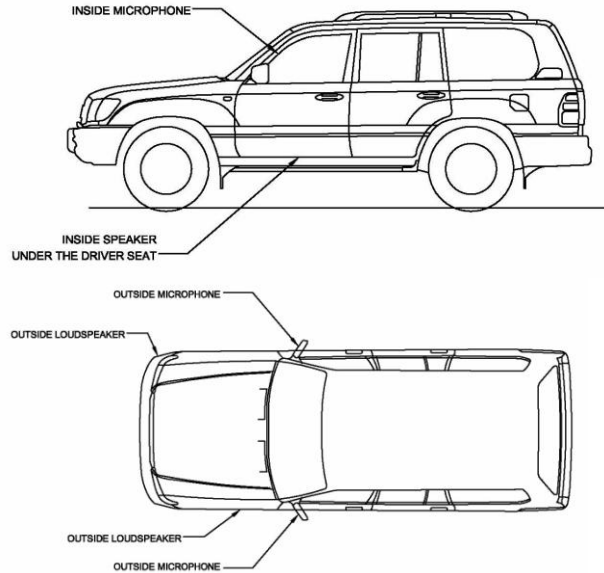
OPTIONS FOR THIS DELIVERY – Extra's:

INTERCOM Two-way Communication Through Closed windows

You can communicate effortlessly through the closed windows, it's an advanced voice sensor, Intercom enables clear communication without compromising driver security.

Once the audio system is switched on, it is automatically activated whenever someone speaks on either side of the closed vehicle, allowing free and natural conversation without the distraction of operating buttons or microphones. After the conversation, the system returns to standby mode.

INTERCOM is a two-way communication through closed windows.



FIRE EXTINGUISHER SYSTEM

The 5 Litre AFFF System is required for the larger fire in engine area. This system is mounted with two 8-foot lengths of aluminium tubing, all the required AN fittings.

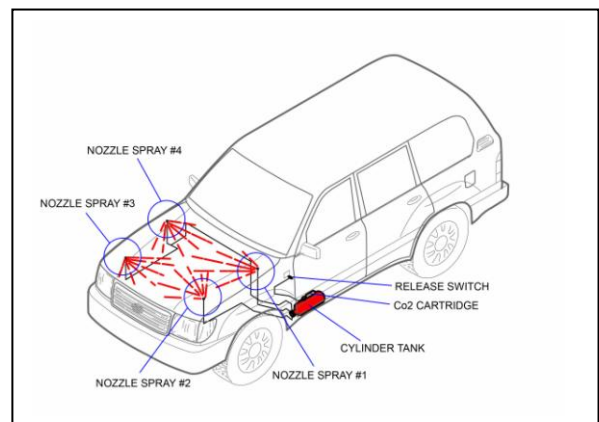


Illustration picture only

Also includes a 2 Lbs. Fire Extinguisher for the cabin compartments.

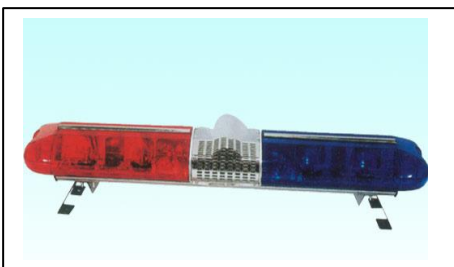
SECURITY DOOR LOCKS

Our dead bolts are secure and use a high quality patented operating motor that is made for us to our unique specification.
The bolt itself is made from high tensile



Illustration picture only

EMERGENCY STROBE LIGHT SYSTEM

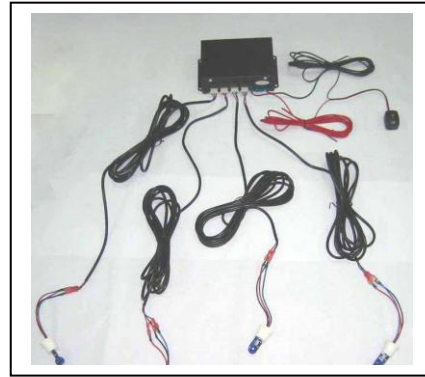
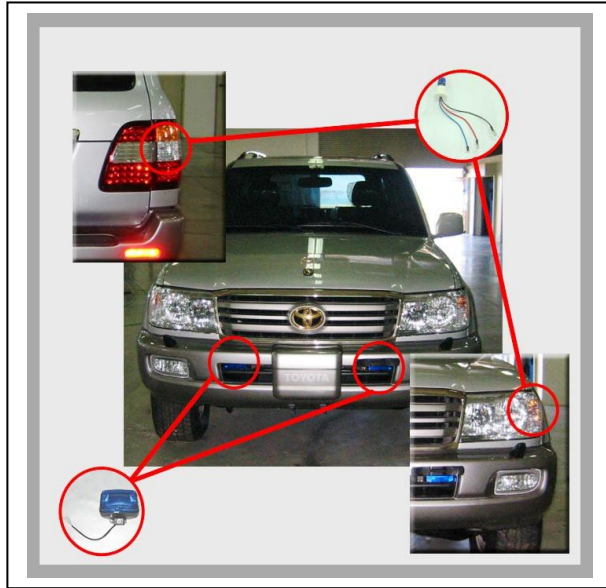


Vehicle is to be fitted with a three (3) tone acoustic siren system that works in combination with vehicle headlights, indicator lights and emergency grill lights

Alarm, immobilizer and siren including panic button. When activated, the siren will sound, and the traffic indicators will flash.

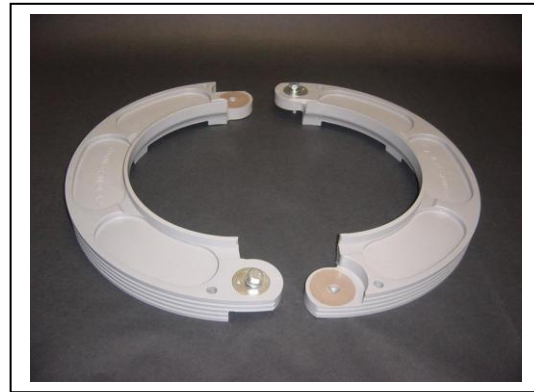


The vehicle is to be fitted with two blue or white flashing emergency grill lights operated by a switch on the vehicle control panel.



TIRES Additional Run Flat * Total Numbering 6 Units**

RUN-FLAT TIRES inserts in six (6) wheels, advanced material compounds, Lightweight, polyester elastomer materials provide maximum protection from breakage following a ballistic attack. The proprietary material compound is strong enough to support the load of fully armoured Toyota Landcruiser which will make driving possible for 50 km at velocity of 50km/h, after tires are damaged by gun fire or other reasons.



HEAVY DUTY HYDRAULIC JACK



Rugged steel construction, ideal for auto and truck repairs. Works in both vertical and horizontal positions. Twist top adds even more height.

- Capacity: 6 ton
- Maximum Height: 14"
- Minimum Height: 8-3/8"
- Certified to meet ASME
- Weight: 11 lbs.

MOTOROLA GM360 VHF RADIO



The Motorola GM360 radio is fully equipped to handle advanced and diverse mobile communication needs. Organisations requiring high levels of versatility and functionality will find this radio an invaluable professional tool.

The 255 channel GM360 mobile radio boasts an enhanced menu, which allows the user easy access to all of the radio's many features. This exceptional radio delivers the superior communication power and control you need to work at maximum efficiency - 24

CODAN NGT SR MOBILE RADIO



The NGT SR is a comprehensive solution to your communication needs. While incorporating all the usual features of Codan's leading-edge High Frequency (HF) radio technology, this transceiver also features a user-friendly handset, advanced calling features and Easitalk as standard. Extensive Automated Link Establishment (ALE) capabilities, voice encryption, GPS, fax, data and email transmission are optional. hours a day, 7 days a week.

THYRAHA MOBILE SATELLITE PHONE



This is the worlds smallest dual mode satellite phone. It is what 'they' call a tri-band unit (satellite, tri-band GSM, and GPS). It weighs in at only 170g, and its dimensions are 13.85cm x 5.3cm x 1.9cm. Now, that is small!

SIDE SHOOTING GUN PORTS TO BE FITTED TO REAR DOORS



GARMIN GPS MAP 76 CSx



The GPSMAP 76CSx is a high quality unit, built very rugged to ensure its compliance to the IPX7 standard, which among other things means that it is waterproof. Looks and feels good, and acquires quickly. The display is somewhat too small to take advantage of installed maps.

Appendix C:

ARMOR CONVERSION LIMITED WARRANTY

warrants any armor related items installed, and conversion related custom workmanship, including transparent armor*, for the period of 2 years or 40,000km, whichever comes first. Any suspected warranty related work must first be confirmed as being necessary by means of technical consultation with a representative of CAG Group.

This warranty is a direct back to back agreement with the manufacturer.

Warranty work authorized to be directly covered shall be performed locally at the nearest manufacturer's authorized facility, and billing forwarded directly to us. After careful assessment of said invoice, we shall, upon consultation and approval, make payment for any/all repairs deemed to be of a reasonable nature by our Warranty Service and Engineering Departments.

we assumes no responsibility for damages incurred through vehicle misuse or abuse, negligence, accidental damage, or any unauthorized modifications or alterations made to the vehicle following delivery of the vehicle to the client. Under the terms of this limited warranty, we shall in no way be held liable for any incidental or consequential damages arising from loss of use, inconvenience, or any commercial loss resulting from the need for warranty work. This warranty covers the repair and/or replacement of warranty related items only, and any non-warranty related additional costs incurred remain the responsibility of the client

Platform vehicles, and any accessories not directly related to the armoring process shall be covered by the warranties of their respective manufacturers, and are not included in the warranty coverage provided by this agreement.